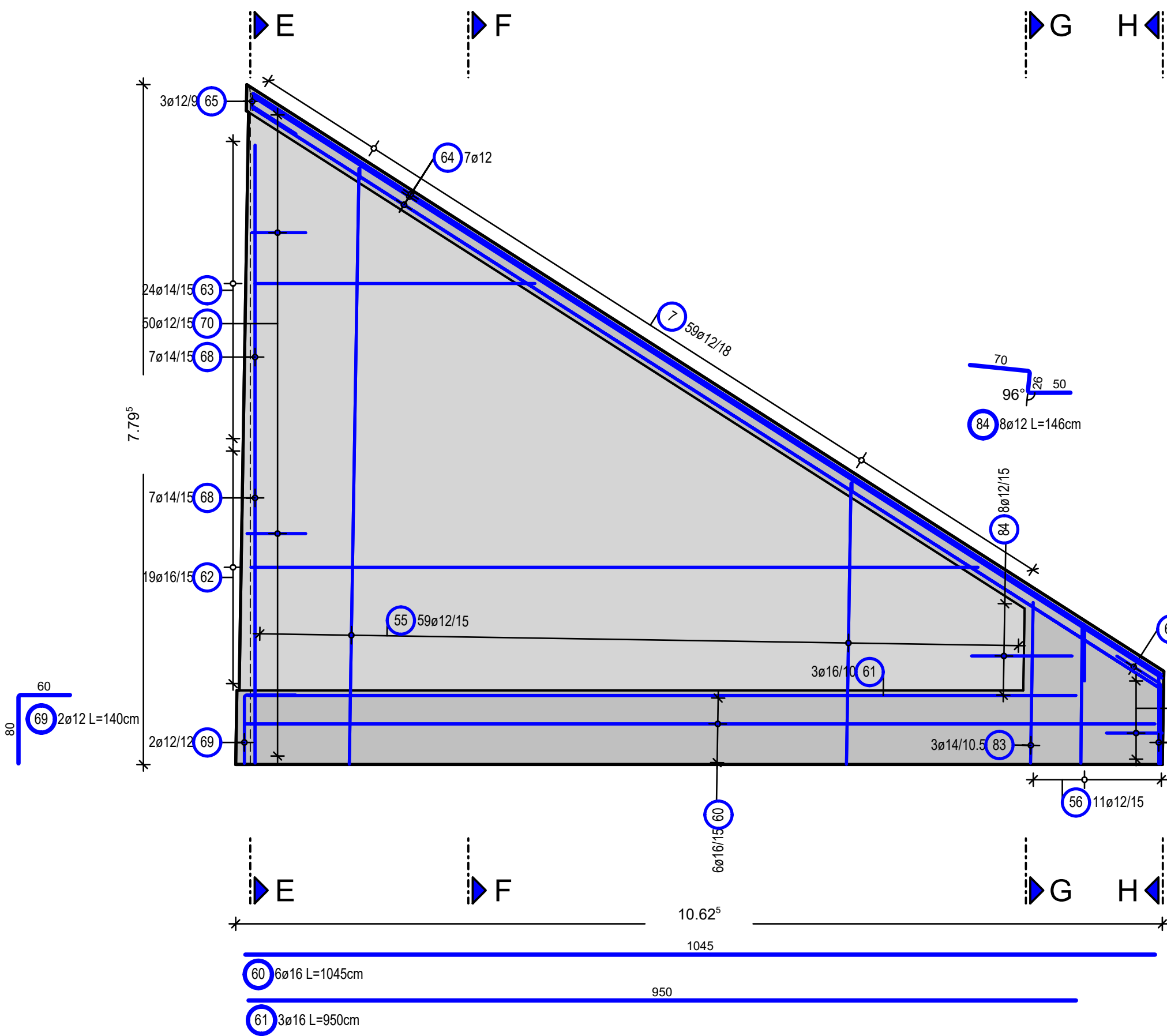
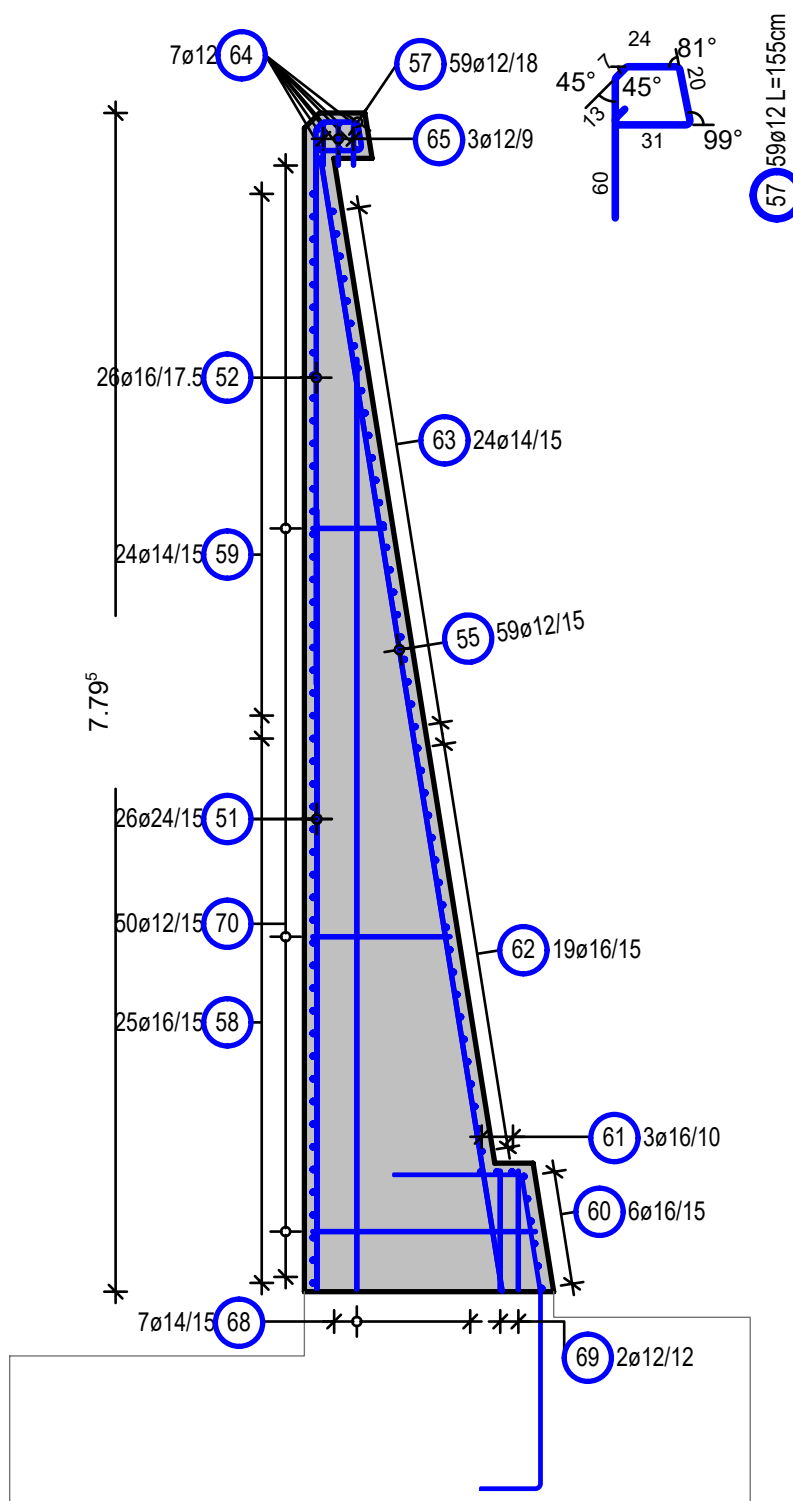


024 UMFAHRUNG VAHRN AP2018 TU RASTSTATION  
13.08.2018 Plan 1322 Teilblätter 1705/1706/1707/1708/1709/1710/1711/1712/1713/1714/1715/1716/1717/1718/1719/1720/1721/1722/1723/1724/1725/1726/1727/1728/1729/1730/1731/1732/1733/1734/1735/1736/1737/1738/1739/1740/1741/1742/1743/1744/1745/1746/1747/1748/1749/1750/1751/1752/1753/1754/1755/1756/1757/1758/1759/1760/1761/1762/1763/1764/1765/1766/1767/1768/1769/1770/1771/1772/1773/1774/1775/1776/1777/1778/1779/1780/1781/1782/1783/1784/1785/1786/1787/1788/1789/1790/1791/1792/1793/1794/1795/1796/1797/1798/1799/1800/1801/1802/1803/1804/1805/1806/1807/1808/1809/1810/1811/1812/1813/1814/1815/1816/1817/1818/1819/1820/1821/1822/1823/1824/1825/1826/1827/1828/1829/1830/1831/1832/1833/1834/1835/1836/1837/1838/1839/1840/1841/1842/1843/1844/1845/1846/1847/1848/1849/1850/1851/1852/1853/1854/1855/1856/1857/1858/1859/1860/1861/1862/1863/1864/1865/1866/1867/1868/1869/1870/1871/1872/1873/1874/1875/1876/1877/1878/1879/1880/1881/1882/1883/1884/1885/1886/1887/1888/1889/1890/1891/1892/1893/1894/1895/1896/1897/1898/1899/1900/1901/1902/1903/1904/1905/1906/1907/1908/1909/1910/1911/1912/1913/1914/1915/1916/1917/1918/1919/1920/1921/1922/1923/1924/1925/1926/1927/1928/1929/1930/1931/1932/1933/1934/1935/1936/1937/1938/1939/1940/1941/1942/1943/1944/1945/1946/1947/1948/1949/1950/1951/1952/1953/1954/1955/1956/1957/1958/1959/1960/1961/1962/1963/1964/1965/1966/1967/1968/1969/1970/1971/1972/1973/1974/1975/1976/1977/1978/1979/1980/1981/1982/1983/1984/1985/1986/1987/1988/1989/1990/1991/1992/1993/1994/1995/1996/1997/1998/1999/2000

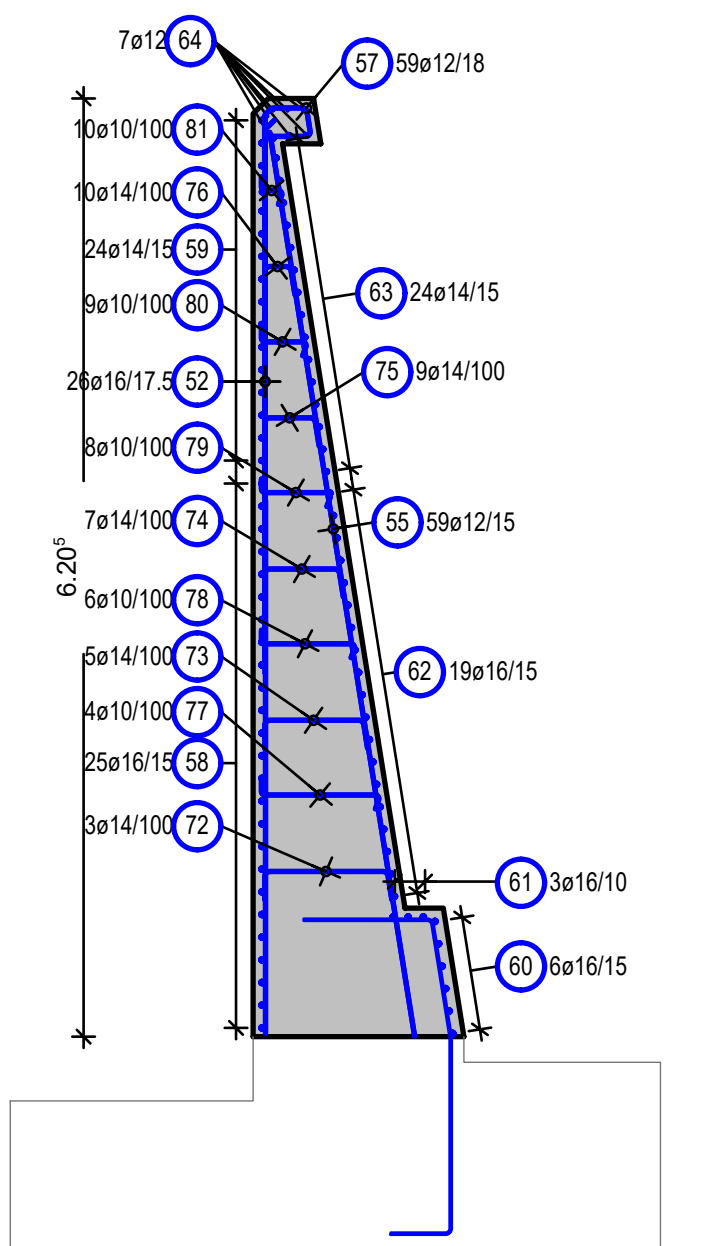
Schnitt 1-1 (luftseitig)  
Sezione 1-1 (a valle)  
M/S 1:50



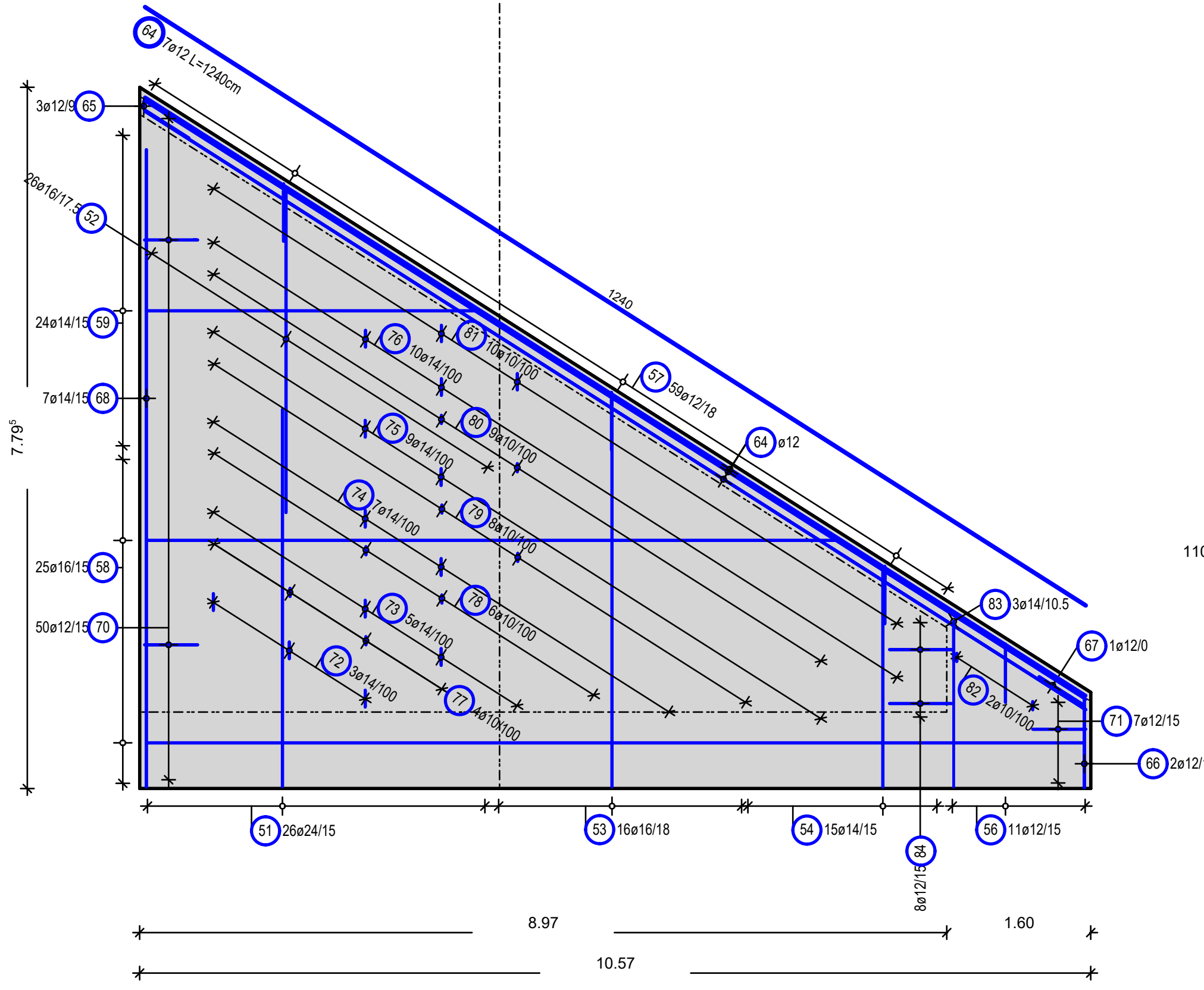
Schnitt E-E  
Sezione E-E  
M/S 1:50



Schnitt F-F  
Sezione F-F  
M/S 1:50



Schnitt 2-2 (erdseitig)  
Sezione 2-2 (lato terra)  
M/S 1:50

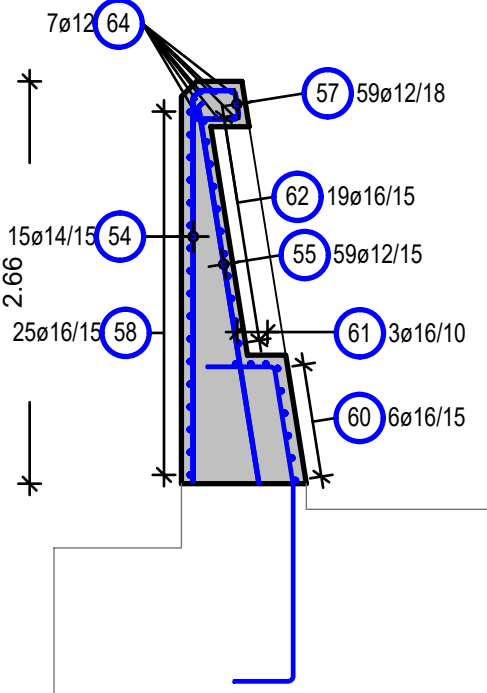


Stabliste / tabella dei ferri

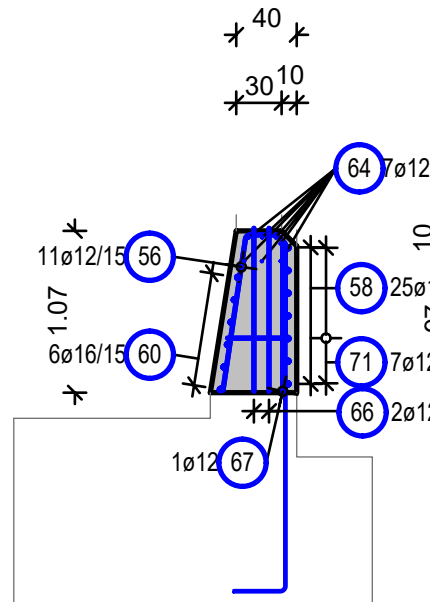
| Pos. | Stk. | Ø    | Einzel<br>Länge<br>lungh.<br>singola | Gesamt<br>Länge<br>lunghezza<br>totale | Masse<br>peso |
|------|------|------|--------------------------------------|--|---------------|
| pos. | n.   | [mm] | [m]                                  | [m]                                    | [kg]          |
| 51   | 26   | 24   | -X-                                  | 103.43                                 | 398.21        |
| 52   | 26   | 16   | 3.60                                 | 93.60                                  | 147.89        |
| 53   | 16   | 16   | -X-                                  | 68.31                                  | 107.93        |
| 54   | 15   | 14   | -X-                                  | 40.48                                  | 48.98         |
| 55   | 59   | 12   | -X-                                  | 284.11                                 | 252.29        |
| 56   | 11   | 12   | -X-                                  | 23.51                                  | 81.21         |
| 57   | 59   | 12   | 1.55                                 | 91.45                                  | 350.20        |
| 58   | 25   | 16   | -X-                                  | 221.70                                 | 96.12         |
| 59   | 24   | 14   | -X-                                  | 79.44                                  | 99.07         |
| 60   | 6    | 16   | 10.45                                | 62.70                                  | 45.03         |
| 61   | 3    | 16   | 9.50                                 | 28.50                                  | 250.56        |
| 62   | 19   | 16   | -X-                                  | 158.58                                 | 96.99         |
| 63   | 24   | 14   | -X-                                  | 80.16                                  | 77.08         |
| 64   | 7    | 12   | 12.40                                | 86.80                                  | 3.52          |
| 65   | 3    | 12   | 1.32                                 | 3.96                                   | 2.89          |
| 66   | 2    | 12   | 1.63                                 | 3.26                                   | 1.36          |
| 67   | 1    | 12   | 1.53                                 | 1.53                                   | 36.34         |
| 68   | 7    | 14   | -X-                                  | 30.03                                  | 2.49          |
| 69   | 2    | 12   | 1.40                                 | 2.80                                   | 84.51         |
| 70   | 50   | 12   | -X-                                  | 95.17                                  | 9.87          |
| 71   | 7    | 12   | -X-                                  | 3.66                                   | 6.41          |
| 72   | 3    | 14   | 1.22                                 | 6.30                                   | 7.62          |
| 73   | 5    | 14   | 1.06                                 | 5.30                                   | 8.06          |
| 74   | 7    | 14   | 0.90                                 | 6.30                                   | 7.02          |
| 75   | 9    | 14   | 0.74                                 | 6.66                                   | 2.44          |
| 76   | 10   | 14   | 0.58                                 | 5.80                                   | 3.07          |
| 77   | 4    | 10   | 0.99                                 | 3.96                                   | 3.31          |
| 78   | 6    | 10   | 0.83                                 | 4.98                                   | 2.83          |
| 79   | 8    | 10   | 0.67                                 | 5.36                                   | 2.16          |
| 80   | 9    | 10   | 0.51                                 | 4.59                                   | 0.74          |
| 81   | 10   | 10   | 0.35                                 | 3.50                                   | 6.82          |
| 82   | 2    | 10   | 0.60                                 | 1.20                                   | 10.37         |
| 83   | 3    | 14   | 1.88                                 | 5.64                                   |               |
| 84   | 8    | 12   | 1.46                                 | 11.68                                  |               |

Gesamtmasse / peso totale [kg] : 2281.42

Schnitt G-G  
Sezione G-G  
M/S 1:50



Schnitt H-H  
Sezione H-H  
M/S 1:50



| -B-  |        | 51 20824  |           |           |           |
|--|--------|-----------|-----------|-----------|-----------|
| Form   | Anzahl | Länge     | Länge     | Länge     | Länge     |
| Pos.   | Q.18   | Einzelst. | Einzelst. | Einzelst. | Einzelst. |
| 51.1   | 1      | 279       | 279       | 279       | 279       |
| 51.2   | 1      | 279       | 279       | 279       | 279       |
| 51.3   | 1      | 298       | 298       | 298       | 298       |
| 51.4   | 1      | 307       | 307       | 307       | 307       |
| 51.5   | 1      | 317       | 317       | 317       | 317       |
| 51.6   | 1      | 326       | 326       | 326       | 326       |
| 51.7   | 1      | 336       | 336       | 336       | 336       |
| 51.8   | 1      | 345       | 345       | 345       | 345       |
| 51.9   | 1      | 355       | 355       | 355       | 355       |
| 51.10  | 1      | 364       | 364       | 364       | 364       |
| 51.11  | 1      | 374       | 374       | 374       | 374       |
| 51.12  | 1      | 384       | 384       | 384       | 384       |
| 51.13  | 1      | 393       | 393       | 393       | 393       |
| 51.14  | 1      | 403       | 403       | 403       | 403       |
| 51.15  | 1      | 412       | 412       | 412       | 412       |
| 51.16  | 1      | 422       | 422       | 422       | 422       |
| 51.17  | 1      | 431       | 431       | 431       | 431       |
| 51.18  | 1      | 441       | 441       | 441       | 441       |
| 51.19  | 1      | 450       | 450       | 450       | 450       |
| 51.20  | 1      | 460       | 460       | 460       | 460       |
| 51.21  | 1      | 469       | 469       | 469       | 469       |
| 51.22  | 1      | 479       | 479       | 479       | 479       |
| 51.23  | 1      | 488       | 488       | 488       | 488       |
| 51.24  | 1      | 498       | 498       | 498       | 498       |
| 51.25  | 1      | 508       | 508       | 508       | 508       |
| 51.26  | 1      | 517       | 517       | 517       | 517       |
| Summe längenhez / Summe der Längen = 103.620 |        |           |           |           |           |